



ADVANCE PRODUCTS & SYSTEMS

FOR FLANGES, VALVES & EXPANSION JOINTS

SAFETY SPRAY SHIELDS

Contains and Detects Hazardous Sprayouts



Reison®

上海睿舜流体技术有限公司
Shanghai Reison Fluid Tech Co., Ltd.

ISO-9001 Certified Company - FM537405



SAFETY SPRAY SHIELDS FOR FLANGES



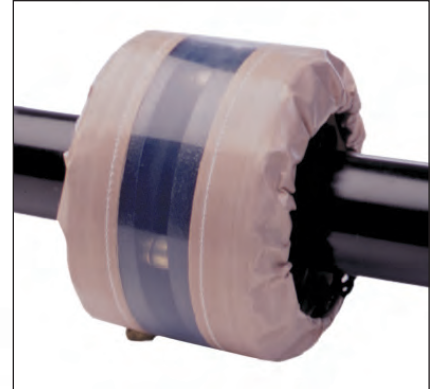
Cloth

APS PTFE cloth safety shields are manufactured from single and multi layered clear cloth for ease of visibility, or from a colored cloth with a leak indicating patch. Weep holes located behind the sensitive pH indicating patch allow the indicator to immediately signal a leak and will change color to red in the presence of an acid, or green if an alkali. The pH patch is also replaceable which allows reuse of the shield. APS safety shields are UV stabilized and resistant to sun, rain and fumes and may be used indoors or outdoors. Our cloth shields are quickly and easily installed by one person without any tools by means of a hook and loop fastener and drawstrings.

- Cloth safety shields are available in seven different materials and eight various styles
- Can be customized for any and all special requirements or applications
- Available for all ANSI, DIN, PN, BS, JIS, and KS flange sizes



PTFE Premium Spray Shield - Style TP



Clear PTFE Spray Shield - Style TC



PTFE Spray Shield - Style T



PTFE Super Shield - Style TW

PTFE

- PTFE coated glass cloth
- PTFE or Nomex thread and drawstring
- Maximum operating temperature 450° F
- Fire and tear resistant.
- Available in five styles: premium, standard, single-ply, clear PTFE and PTFE white
- Standard color is brown
- Broad spectrum of chemical resistance

Standard

- Our most popular and best selling shield
- 3-ply multilayered reinforced construction

Premium

- High PTFE content for severe applications
- Outlasts all other brands on market.
- 3-ply multi-layered construction
- Laboratory test proven

Clear PTFE

- Similar in design to standard PTFE shields
- 100% clear PTFE strip in center of shield allows for visual inspection

Single Ply

- Similar in design to standard PTFE shield
- Single-layered, economical construction for less severe applications

PTFE Super Shield

- Solid PTFE construction (expanded PTFE cloth)
- PTFE or Nomex cord, thread and reinforcement
- Suitable for applications where coated glass is not acceptable
- Reinforced construction through multi-layered design
- White in color



SAFETY SPRAY SHIELDS FOR FLANGES



ADDITIONAL CLOTH



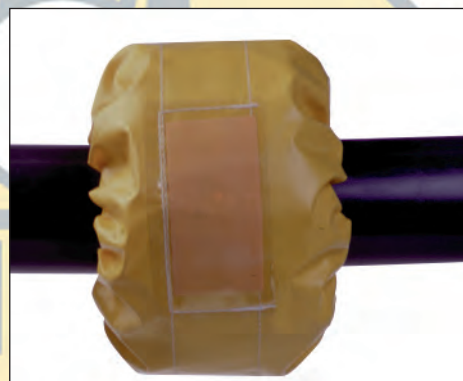
Polypropylene Spray Shield - Style P

Polypropylene

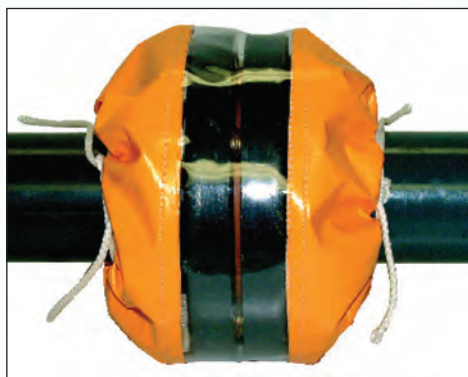
- 100% black polypropylene cloth, thread, and drawstring
- Polypropylene stiffener lines the interior for added protection
- Maximum operating temperature 200° F

Polyvinyl Chloride (PVC)

- Manufactured from yellow, reinforced polyvinyl chloride (other colors available)
- Reinforced thread and drawstring
- Maximum operating temperature 170° F



Polyvinyl Chloride (PVC) Spray Shield - Style V



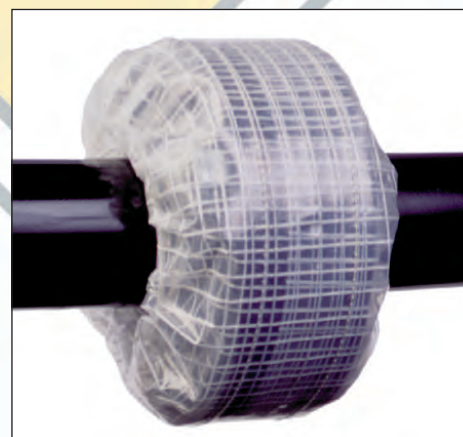
Clear (PVC) Spray Shield - Style VC

Clear PVC

- Similar in design to standard PVC shields
- Clear vinyl strip in center allows for visual inspection

Polyethylene

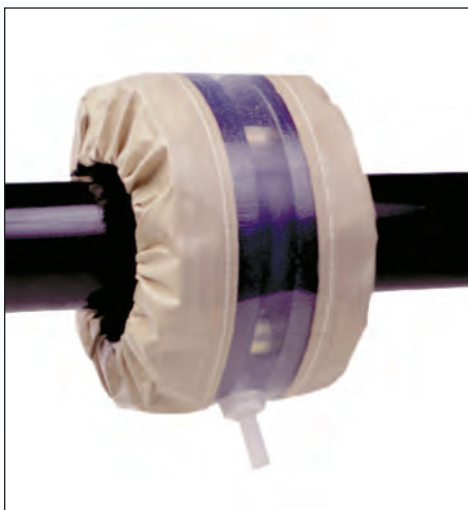
- Manufactured from transparent, reinforced polyethylene
- Reinforced thread and drawstring
- Maximum operating temperature 170° F



Polyethylene Spray Shield - Style PE

Optional Drain Feature

- Available on clear PTFE shield
- 100% PTFE drain nipple attached to bottom of shield
- Used for secondary containment, venting, and emissions testing



Clear PTFE Spray Shield with Drain - Style TCD



SAFETY SPRAY SHIELDS FOR FLANGES



Metal

- Used in high temperature, high pressure or when conditions are unfavorable for cloth shields
- Manufactured from 22 or 24 gauge sheet metal
- Slotted overlapped edges prevent lateral spray-outs
- Spacer rods raise shield off flange to dissipate pressure
- Stainless steel screws and keyway slot make installation simple
- Stainless steel hose clamp connections OPTIONAL
- Easily installed by one person with a screwdriver
- Available with anti-mist screen to help eliminate aerosol effect
- Available for all standard flange sizes
- Customized sizes also available

Stainless Steel

- Recommended for corrosive and hazardous environments
- Available in 304 and 316 grade stainless
- Maximum operating temperature 2,000° F
- Maximum operating pressure 3,500 psi

Optional Drain Feature

- Available in 304 and 316 stainless steel
- Stainless steel nipple attached to bottom of shield
- Used for secondary containment, ventings and emissions testing



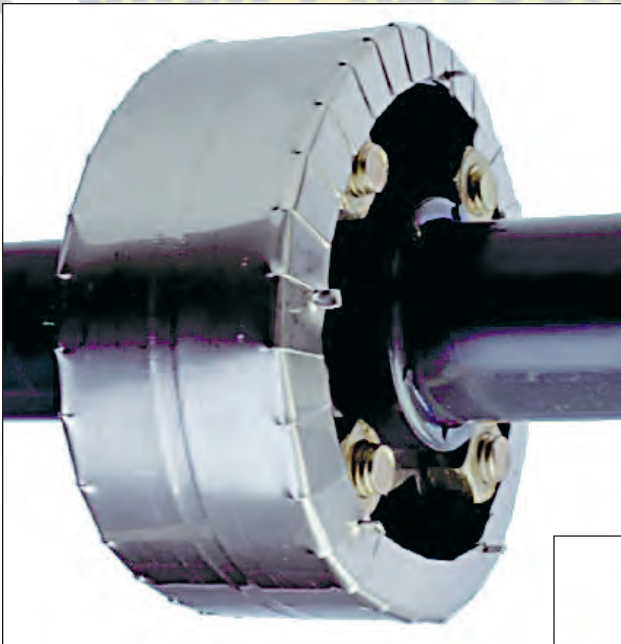
Patent Pending

Arrestor Splash Deflector® Shield

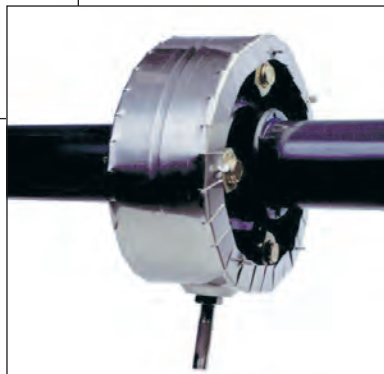
Arrestor Splash Deflector®

Specifically designed to capture sprayouts from faulty flanges carrying dangerous liquids, the Arrestor Splash Deflector® gets the job done right the first time.

- Produced entirely with stainless steel
- Easy & accurate installation by one person
- No maintenance required
- Reusable many times over the life of the installation
- Available for most ANSI & API flanges
- Lightweight



Stainless Steel Spray Shield



Stainless Steel Spray Shield with Drain



SAFETY SPRAY SHIELDS ON LOCATION



SAFETY FOR PERSONNEL, EQUIPMENT AND THE ENVIRONMENT



**ACID UNLOADING
PROCEDURE**

1. MATCH BULK CHEMICAL WITH
CORRECT UNLOADING STATION
2. CONNECT HOSE
3. PRESSURE TANKER
4. OPEN INTERNAL VALVE
5. OPEN OUTLET VALVE
6. CHECK FOR LEAKING FITTINGS
7. OPEN ACID UNLOADING VALVE
TO ACID TANK
8. OBSERVE UNLOADING
9. DISCONNECT HOSE WHEN
UNLOADING IS COMPLETE



APS Safety Spray Shields

Sizes in stock - 1/2" to 48"

Custom shields are available
upon request



SAFETY SPRAY SHIELDS FOR EXPANSION JOINTS & VALVES



Expansion Joint Shields

- Available in same cloth and metal materials as other shields
- Same quality design as other cloth shields
- Attached by velcro fasteners and drawstrings
- Allows for movement of the expansion joint without any change in effectiveness
- Available for all brands and styles of expansion joints



Clear PTFE Expansion Joint Shield



PTFE Expansion Joint Shield

Valve Shields

- Available in same cloth and metal materials as other shields
- Manufactured to fit all types of valves:
 - *Butterfly*
 - *Globe*
 - *Check*
 - *Diaphragm*
 - *Gate*
 - *Ball*
 - *Plug*
 - *Control*



Clear PTFE Ball Valve Shield



Globe Valve Bonnet Shield



SAFETY SPRAY SHIELDS FOR SPECIALTY ITEMS



Pipe Vent Covers

- Designed to cover the pipe vent outlet on safety relief valves and rupture discs
- Manufactured from heavy duty polyvinyl chloride (PVC) or PTFE.
- Weatherproof: prevents rainwater and snow from entering
- Keeps out birds and insects
- UV stabilized and chemical resistant
- Simple and easy to install.
- Contains a drawstring for securing
- Contains a grommet with rope attached to prevent loss
- Available for all pipe sizes
- Available in angle or straight cut

Hose Shields

- Manufactured from PTFE and polyvinyl chloride
- pH indicating patch signals leaks
- Available for any size and length
- Attached by velcro fasteners and drawstrings - wraparound design or drawstrings only - tube design



Transfer Line Sleeve



Hose Shield



"T" Type Fitting Shield

Transfer Line Sleeves

- Quickly fits over the locking mechanism
- Have rapid connect and release tie locks
- Are reusable and UV resistant
- Are made of rugged PTFE impregnated glass cloth with PTFE drawstrings suitable for maximum operating temperature of 450° F
- Are economical

Other Specialty Shields

Custom designed for:

- Sight Glasses
- Flow Indicators
- Pressure Vessels
- Pumps
- Fittings
- Instruments
- Manways

TO ORDER

METAL SHIELDS

FOR VALVES - PLEASE SPECIFY

1. Pipe Size
2. Type of Valve and Manufacturer
3. Width of Valve Including Flange
4. Location of Control Arm
5. Diameter of Opening to Accommodate Stem
6. Type of Metal - 304, 316 Stainless

FOR FLANGES - PLEASE SPECIFY

1. Pipe Size
2. Pressure Rating
3. Type of Metal - 304, 316 Stainless

CLOTH SHIELDS

FOR VALVES - PLEASE SPECIFY

1. Pipe Size
2. Type of Valve and Manufacturer
3. Width of Valve Including Flange
4. Location of Control Arm
5. Diameter of Opening to Accommodate Stem
6. Type Cloth - PTFE, Polyvinyl, Polyethylene, Polypropylene

FOR FLANGES - PLEASE SPECIFY

1. Pipe Size
2. Pressure Rating
3. Type Cloth - PTFE, Polyvinyl, Polyethylene, Polypropylene

For Expansion Joints - Please Specify

1. Pipe Size
2. Manufacturer of Expansion Joint
3. Number of Convolutions

Examples of Industries That Use Spray Shields

- Aerospace
- Mining
- Automotive
- Petrochemical
- Chemical
- Pharmaceutical
- Cosmetic & Perfume
- Nuclear Power
- Electronics & Semiconductor
- Conventional Pulp & Paper
- Food & Beverage Processing
- Refineries
- Manufacturers of Household Cleaners/Detergents
- Steel Industry
- Sewage & Waste Water Treatment
- Manufacturers of Insecticides/Herbicides
- Military Ships
- Commercial Ships

Other Quality Products

- Flange Isolating Gasket Kits
- Kleerband® Flange Protectors
- Radolid® Nut & Bolt Protection Caps
- UBolt-Cote® & Atlas® Pipe Supports
- Casing Spacers/Centralizers and End Seals for Dual Containment
- Monolithic Isolation Joints
- Innerlynx® Pipe Penetration Seals
- Foreman Night Caps
- Hammer Cushion Pads



Made in USA



ISO 9001
FM 537405

Advance
Products & Systems, Inc.

Reison®

上海睿舜流体技术有限公司
Shanghai Reison Fluid Tech Co., Ltd.

上海市嘉定区嘉美路1385号新1号楼1层
1 F, New Building #1, No.1385 Jiamei Road,
Jiading District, Shanghai, China
电话/Tel: +86 21 62988993, 62988995, 33518901
网址/Website: www.reison.net



Reison® 是上海睿舜流体技术有限公司拥有的注册商标。